

Strategic Transport Appraisal

£7m to “scope out the requirements for the next twenty years, building on the completion of the AWPR and other planned investments”. Work to date has facilitated regional strategy, and north-east input to national policy.



nestrans

1

Proposals FY22/23 Onwards

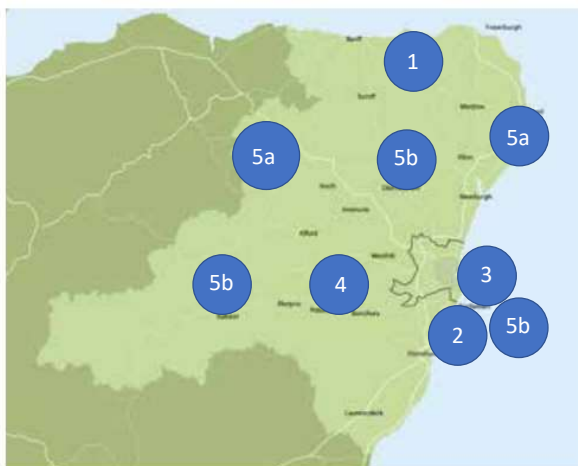


Figure 1 – The Nestrans Region.

1. A90(N) / A952 Ellon to Peterhead & Fraserburgh
2. A952 Wellington Road
3. Craiginches Rail Freight
4. ASAM19 – Strategic Development Pressures
5. Live Lab Demonstrators
 - a. Regional Hydrogen Fuelling Facilities
 - b. Transport Mobility Hubs

nestrans

2

A90/A952 Ellon to Peterhead and Fraserburgh



- **Rationale** Critical linkage north of Ellon to Peterhead and Fraserburgh, with safety and reliability concerns, supports the Green Freeport bid (Aberdeen, Peterhead, St Fergus), and major ports.
- **Proposal** Firstly collate evidence in revised policy context and thereafter update on previous option work.
- **Links** to Green Freeport, Economic Strategy, (Fish, Energy Transition, Regeneration)
- **Benefits** Support decisions to invest in the route, and focus other contributions. Logistical efficiency, opens opportunities for new technologies.

nestrans

3

A956 Wellington Road



- **Rationale** Key corridor facilitating Energy Transition Zone, South Harbour and community linkages
- **Proposal** Requirement to firm up on options for Hareness Roundabout, Souterhead Roundabout.
- **Links** ETZ and Master-planning Exercise, External Links project, and Aberdeen Rapid Transit/Active Travel proposals.
- **Benefits** Outcomes for the junctions could be incorporated into Outline Business Case for External Links Project.
- Design options would consider ETZ master-planning and community connection needs.

nestrans

4

Rail Freight at Craiginches



Rationale Key rail freight opportunity site to south of City, part of ETZ masterplan area, adjacent to South Harbour.

Proposals Opportunity to determine the growth prospects, and what the implications of these are, to inform ETZ masterplan.

Links ETZ masterplan, Green Freeport, national rail freight review, Aberdeen to Central Belt rail project, Wellington Road Corridor work.

Benefits Ensure that options for future growth are maintained / facilitated.

nestrans

5

ASAM19 – Strategic Development Pressures & Opportunities



- **Rationale** Previous work identified future network pressures (pre AWPR forecasts). Opportunity to validate and develop post-AWPR, post-Covid
- **Proposals** Targeted testing of future anticipated strategic growth pressures / opportunities to inform the next Local Development Plans.
- **Links** Development Plans, and other strategic growth proposals.
- **Benefits** Tying up of land use decisions and transport measures, facilitating informed “infrastructure first” approach.

nestrans

6

Live Lab Demonstrators – Regional Hydrogen Refuellers

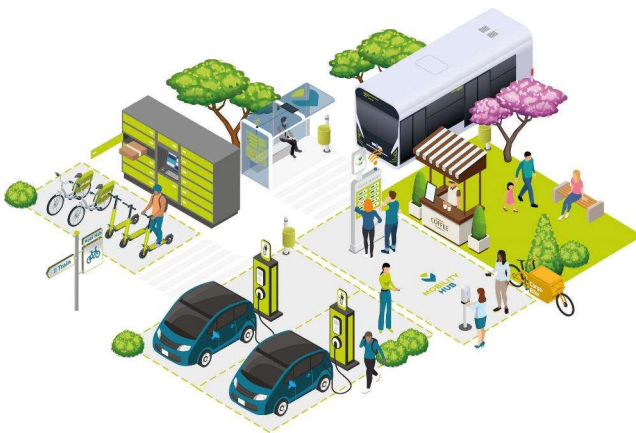


- **Rationale** An expanding network of hydrogen refuellers is key to the region's hydrogen ambition.
- **Proposals** scope up specification, locations, and delivery pathway for “demountable” facilities that enable early adopter van and HGV usage, beyond the radius of Aberdeen.
- **Links** Green Freeport, Regional Hydrogen Ambition, National decarbonisation route map.
- **Benefits** Regional hydrogen refuelling network to facilitate introduction of trials and early adoption of vehicles, particularly the logistics sector.
- **Leads** to implementation, and evaluation, to inform subsequent facilities.

nestrans

7

Live Lab Demonstrators – Transport Mobility Hubs



- **Rationale** Concept to explore different models of transport mobility hubs to see what is most effective in north east context. Seen as being key to enabling a move to decarbonised and integrated transport system.
- **Proposals** develop a variety of hubs across both City and Shire (say 3+3), evaluate, to inform future development. Supported with digital tools such as GoABZ.
- **Links** City Centre Masterplan, Active Travel for Employment Zones, 20min neighbourhood approach, tourism development.
- **Benefits** Inclusive opportunities for communities, tailored to local needs.
- **Leads** to implementation, and evaluation, to inform subsequent facilities.

nestrans

8